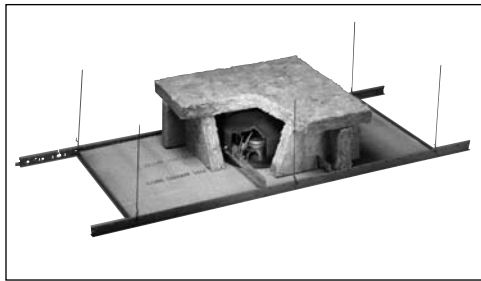


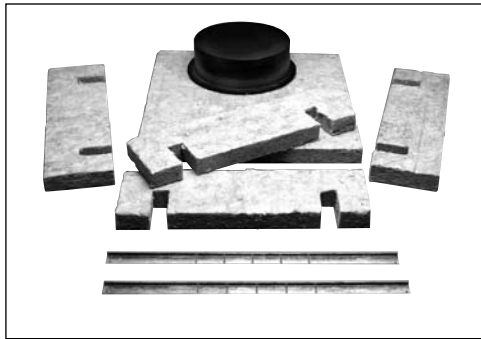


# UL CLASSIFIED FIRE-RESISTANT SPEAKER ASSEMBLIES

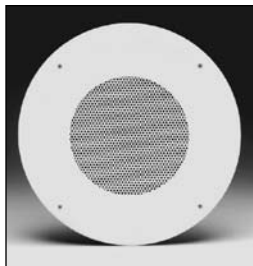
FR Series



**FR Series  
Installed Cut-Away**



**C10A**



**61-8**

**UL 263 Classified**  
FR Series speaker assemblies include  
an enclosure, pre-cut fiber panels, rails,  
an FR speaker and FR baffle

## FEATURES

- The Only UL Classified Product that Meets Fire-Protective Standards Required by Local Regulatory Agencies
- Wide Selection of FR Series Loudspeaker Components are UL Classified Versions of Atlas-Sound's High Performance and Quality Standard Loudspeaker Models
- Audio Performance and Mechanical Specifications of FR Series Loudspeakers are the Same as the Equivalent Non-FR Models
- Pre-Cut Fiber Panels Make Installation Quick and Easy Requiring No Special Tools or Skills
- Lower Installed Cost Compared to the Labor Intensive Alternative of Contractor-Constructed Drywall Fire Boxes

## APPLICATIONS

Architects, consultants, and contractors should request FR Series speaker assemblies when drop-in fire protective ceilings are required to meet local fire or building code requirements. FR Series assemblies are ideal for use with main loudspeaker systems in schools, convention centers, hotels, industrial facilities, churches and other public buildings. Additionally, they are suitable for use with auxiliary loudspeaker systems in arenas, airports, theatres, office building corridors, and lobbies.

## GENERAL DESCRIPTION

Atlas-Sound has the only speaker assemblies that are UL classified for fire-resistance in the United States and Canada. The FR Series has passed a fire-rating up to three hours (rating varies by ceiling construction), and has been tested in accordance with the UL standard – Fire Test of Building Construction and Materials, ANSI/UL263 (ASTM E119, NFPA 251). The FR Series is pre-manufactured and assembles quickly on-site with no special tools or skills. The assemblies include an enclosure-fiber kit, UL listed speaker/transformer assembly, and choice of UL Listed baffle. Each enclosure-fiber kit includes pre-cut fiber panels, metal enclosure, rail set, and hardware. Atlas-Sound FR Series offers a wide variety of cost, performance, and aesthetic options. The 43 speaker/transformer combinations approved for use in FR assemblies are FR versions of the industry standard Atlas-Sound Strategy Series FA134, FA136, FA138 models and the C803A, C5A, C10A, and FC104 loudspeakers. The approved baffles are also FR versions of familiar Atlas-Sound models. To maintain UL Classification for fire-resistance, enclosure-fiber kits must be used with FR Series components.

## SPECIFICATIONS

**UL Standard:** ANSI / UL 263  
(ASTM E119, NFPA 251)

**Fiber:** UL Classified  
Surface Burning Characteristics:  
Flame Spread 15  
Smoke Developed 0

THREE

Specifications subject to change without notice



1601 JACK MCKAY BLVD. / ENNIS, TEXAS 75119 U.S.A.  
TELEPHONE: (800) 876-3333 / FAX (800) 765-3435

**AtlasSound.com**

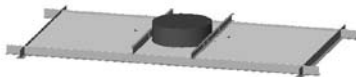
MODEL	DESCRIPTION	MODEL	DESCRIPTION
<b>FA95-4FR</b>	Enclosure-Fiber Kit, (FA95-4), rails, hdwr.	<b>96-4FR</b>	Enclosure-Fiber Kit, (96-4), rails, hdwr.
<b>FA95-6FR</b>	Enclosure-Fiber Kit (FA95-6), rails, hdwr.	<b>96-4XFR</b>	Enclosure-Fiber Kit, (96-4X), rails, hdwr.
<b>FA95-8FR</b>	Enclosure-Fiber Kit, (FA95-8), rails, hdwr.	<b>96-8FR</b>	Enclosure-Fiber Kit, (96-8), rails, hdwr.
<b>FA97-4FR</b>	Enclosure-Fiber Kit, (FA97-4), rails, hdwr.	<b>191-78FR</b>	Enclosure-Fiber Kit, (191-78), rails, hdwr.
<b>FA97-6FR</b>	Enclosure-Fiber Kit, (FA97-6), rails, hdwr.	<b>193-8FR</b>	Enclosure-Fiber Kit, (193-8), rails, hdwr.
<b>FA97-8FR</b>	Enclosure-Fiber Kit, (FA97-8), rails, hdwr.	<b>198-4FR</b>	Enclosure-Fiber Kit, (198-4), rails, hdwr.
<b>95-8FR</b>	Enclosure-Fiber Kit, (FA95-8), rails, hdwr.	<b>198-8FR</b>	Enclosure-Fiber Kit, (198-8), rails, hdwr.

## EASY TO ORDER!

- 1) Choose from 43 FR Series speaker assemblies (listed on opposite page).
- 2) Select matching FR enclosure-fiber kit (listed on opposite page).
- 3) Select matching FR baffle (listed on opposite page).

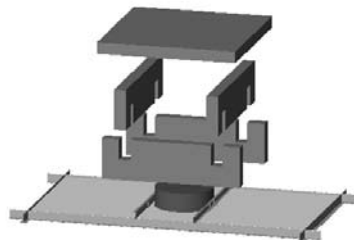
## ATLAS SOUND MAKES INSTALLATION EASY!

1



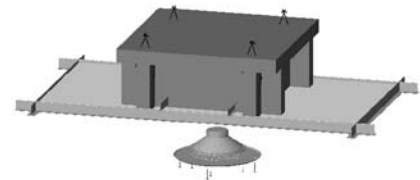
Attach rails to enclosure

2



Assemble pre-cut fiber panels over enclosure, notch fiber at rails

3



Wire top panel to sides at four corners

Specifications subject to change without notice



1601 JACK MCKAY BLVD. / ENNIS, TEXAS 75119 U.S.A.  
TELEPHONE: (800) 876-3333 / FAX (800) 765-3435

**AtlasSound.com**

## Strategy Series – Fire-Resistant System Components

FIREBOX KIT*	MOUNTS SPEAKER ASSEMBLY*	INCLUDES		MOUNTS CHOICE OF BAFFLE
		SPEAKER	XFMR	
FA95-4FR	FA114T72FR	FA114	T72	FA51-4FR
FA97-4FR	FA134T42FR	FA134	T42	FA170-4FR
	FA134T47FR		T47	FA720-4FR
	FA134T87FR		T87	FA730-4FR
FA95-6FR	FA116T72FR	FA116	T72	FA51-6FR
FA97-6FR	FA136T42FR	FA136	T42	FA170-6FR
	FA136T47FR		T47	FA720-6FR
	FA136T87FR		T87	FA730-6FR

\* Firebox kit, speaker assembly, and baffle are ordered separately and must be used together to comply with UL classification.

FIREBOX KIT*	MOUNTS SPEAKER ASSEMBLY*	INCLUDES		MOUNTS CHOICE OF BAFFLE
		SPEAKER	XFMR	
FA95-8FR	FA118T72FR	FA118	T72	FA51-8FR
FA97-8FR	FA138T42FR	FA138	T42	FA170-8FR
	FA138T47FR		T47	FA720-8FR
	FA138T87FR		T87	FA730-8FR

\* Firebox kit, speaker assembly, and baffle are ordered separately and must be used together to comply with UL classification.

## Standard Series – Fire-Resistant System Components

FIREBOX KIT*	SPEAKER ASSEMBLY*	SPEAKER ASSEMBLY INCLUDES		MOUNTS CHOICE OF BAFFLE
		SPEAKER	XFMR	
96-4FR or 198-8FR	FC104T25FR	FC104	T25	51-4FR
	FC104T70FR		T70	(mounts 96-4FR)
	FC104T42FR		T42	161-4FR
	FC104T47FR		T47	(mounts 198-4FR)
	FC104T72FR		T72	

\* Firebox kit, speaker assembly, and baffle are ordered separately and must be used together to comply with UL classification.

FIREBOX KIT*	SPEAKER ASSEMBLY*	INCLUDES		MOUNTS CHOICE OF BAFFLE
		SPEAKER	XFMR	
95-8FR	C5AT25FR	C5A	T25	51-8FR (mounts 95-8FR & 96-8FR)
96-8FR	C5AT70FR		T70	62-8FR (mounts 95-8FR & 96-8FR)
191-78FR	C5AT72FR		T72	61-8WFR (mounts 95-8FR & 96-8FR)
193-8FR	C5AT42FR		T42	164-8FR (mounts 191-78FR)
198-8FR	C5AT47FR		T47	169-8FR (mounts 193-8FR)
	C5AT87FR		T87	161-8FR (mount 198-8FR)
95-8FR	25FR	C10A	T25	51-8FR (mounts 95-8FR & 96-8FR)
96-8FR	C10AT70FR		T70	62-8FR (mounts 95-8FR & 96-8FR)
191-78FR	C10AT72FR		T72	61-8WFR (mounts 95-8FR & 96-8FR)
193-8FR	C10AT42FR		T42	164-8FR (mounts 191-78FR)
198-8FR	C10AT47FR		T47	169-8FR (mounts 193-8FR)
	C10AT87FR		T87	161-8FR (mount 198-8FR)
95-8FR	C803AT25FR	C803A	T25	51-8FR (mounts 95-8FR & 96-8FR)
96-8FR	C803AT70FR		T70	62-8FR (mounts 95-8FR & 96-8FR)
191-78FR	C803AT72FR		T72	61-8WFR (mounts 95-8FR & 96-8FR)
193-8FR	C803AT42FR		T42	164-8FR (mounts 191-78FR)
198-8FR	C803AT47FR		T47	169-8FR (mounts 193-8FR)
	C803AT87FR		T87	161-8FR (mount 198-8FR)

\* Firebox kit, speaker assembly, and baffle are ordered separately and must be used together to comply with UL classification.

1601 JACK MCKAY BLVD. / ENNIS, TEXAS 75119 U.S.A.  
TELEPHONE: (800) 876-3333 / FAX (800) 765-3435



FA134



FA136



FA138



FA730-6



FA720-6



FA51-6



FA170-6



FC104-T70



C5A



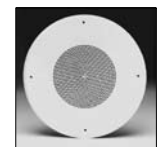
C10A



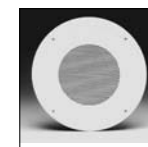
C803A-T87



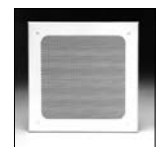
51-8



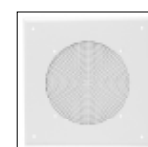
62-8



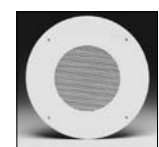
61-8W



164-8A



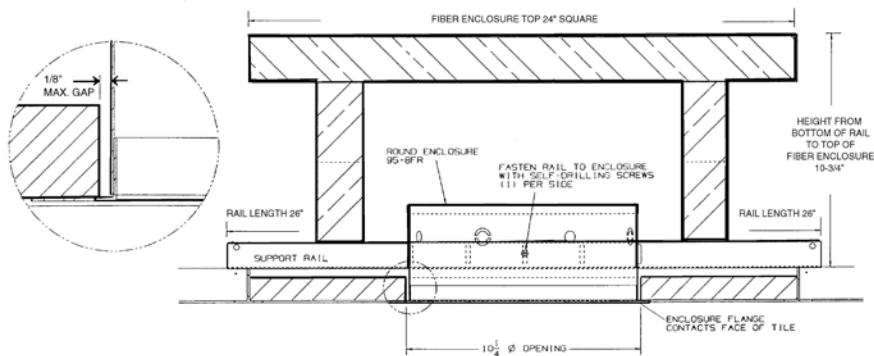
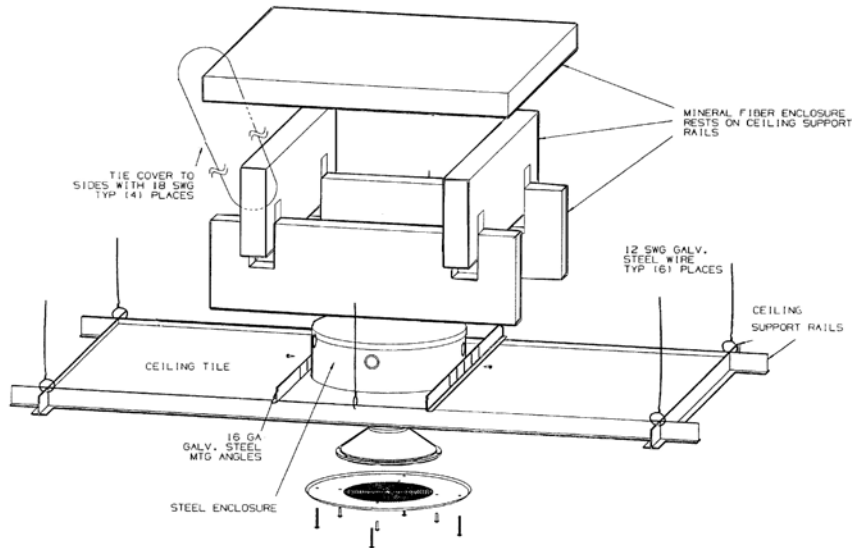
169-8A



161-8

THREE

## DIMENSIONAL DRAWINGS



## ARCHITECT AND ENGINEER SPECIFICATIONS

Speaker assembly for use in fire protective ceiling shall be Atlas-Sound UL classified fire-resistant speaker assembly Model \_\_\_\_\_ (FR Series). The assembly shall have passed a fire-rating up to three hours and shall have been tested in accordance with UL Standard ANSI/UL263 (ASTM E119, NFPA 251). The assemblies shall include an enclosure-fiber kit,

UL listed speaker/transformer assembly, and UL listed baffle. Each enclosure-fiber kit shall include pre-cut fiber panels, metal enclosure, rail set and hardware. Dimensions of the assembled fiber kit shall be \_\_\_\_\_.

*Specifications subject to change without notice*



1601 JACK MCKAY BLVD. / ENNIS, TEXAS 75119 U.S.A.  
TELEPHONE: (800) 876-3333 / FAX (800) 765-3435

***AtlasSound.com***